

Underground electro-mechanical operator

for residential swing-leaf gates with single-leaf width of 3.50 m and max weight of 500 kg
See graph on page 45

CE



- Invisible operator.
- Access to the operator is possible without removing the leaf.
- Protection class IP 67.
- Maximum anti-crushing safety thanks to the exclusive electronic device in the 452 MPS - 455 D unit.
- Non reversing.

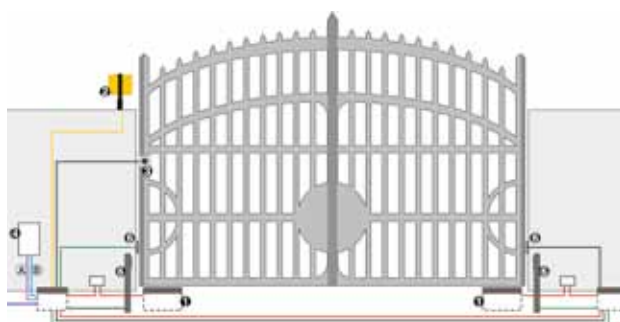
NEW

- New 770N version with new design available from June 2012.

DIMENSIONS AND TECHNICAL SPECIFICATIONS OF 770 / 770N

| | |
|-------------------------------------|--|
| Reduction ratio | 1:1418 |
| Power supply voltage | 230 Vac (+6%-10%) 50 Hz |
| Electric motor | 1400 r.p.m. |
| Absorbed power | 380 W |
| Absorbed current | 1.7 A |
| Thermal protection on motor winding | 140 °C |
| Max traction thrust force | 330 Nm |
| Angle speed | 6°/sec |
| Type and frequency of use at 20 °C | S3 - 30% |
| Leaf max. opening angle | 110° (140° and 180° with optional kit) |
| Leaf max width | 3.5 m (110°), 3 m (180° with optional opening kit), 2.5 m (140° with optional opening kit) |
| Weight | 12 kg (14 kg with carrier case) |
| Protection class | IP 67 |
| Operator dimensions | 360x150x140 mm |
| Operating ambient temperature | -20 °C to +55 °C |
| Carrier case dimensions | 430 x 307.5 x 214 mm |

EXAMPLE OF A TYPICAL INSTALLATION



■ (A) Low voltage cabling

- 3 cables 3x0.50
- 1 cable 2x0.50

■ (B) Power cabling (230 V)

- 2 cables 3x1.50+T
- 1 cable 2x1.5+T
- 1 cable 2x1.5

N.B.: Cable sections in mm²

| Ref. | Q.ty | Description | Item code |
|------|------|--|--------------|
| ① | 2 | Operators 770 | 106752 |
| ④ | 1 | Control board 452 MPS | 790916 |
| ④ | 1 | Enclosure mod. E | 720119 |
| | 2 | Carrier cases with key-operated release system | 490065 |
| ⑤ | 1 | Receiver RP 433 SLH | 787824 |
| | 1 | Two-channel transmitter XT2 433 SLH LR | 787007 |
| ② | 1 | Flashing lamp FAACLIGHT | 410013 |
| ⑥ | 2 | Pair of photocells SAFEBEAM | 785165 |
| ⑥ | 2 | Aluminium columns for SAFEBEAM | 401039 |
| | 2 | Foundation plates for columns | 737637 |
| ③ | 1 | Key-operated push-button T10E | 401019001/36 |
| | 3 | Plastic enclosure to be walled in | 720086 |

Notes

IMPORTANT: The configuration does not include the safety devices (i.e.: active or passive safety edges) that are to be determined according to the specific "risk analysis" of each installation (Ref.: UNI-EN 12445 and 12453 European Standards).

- The indicated price does not include the installation costs and the expenses for masonry, electrical and metalwork preparations.

770

| Model | Use | | | Control unit | Item code |
|-----------------|----------------------------|------------------|-----------------------------|--------------|-----------|
| | Single-leaf max. width (m) | Max. weight (kg) | Use frequency (cycles/hour) | | |
| 770 | 2 (3.5 with electric lock) | 500 | 20 | Not included | 106752 |
| NEW 770N | 2 (3.5 with electric lock) | 500 | 30 | Not included | 106754 |

The 770 or 770N operator package includes: an electro-mechanical operator, transmission leverage, a thrust capacitor 12.5 µF 400 V.

The carrier case package includes: a carrier case, a cover in stainless steel, a leaf support bracket with a lever release system, two release keys and installation accessories.

CONTROL UNITS



Control board 455 D
Technical specifications page 141

Item code 790917

Enclosure mod. L
for control boards

Item code 720118



Control board 452 MPS
Technical specifications page 140

Item code 790916

Control board 462 DF (*)
Technical specifications page 142

Item code 790918

Enclosure mod. E
for control boards

Item code 720119

Enclosure mod. LM
for control boards

Item code 720309

(*) Programmable with Digiprogram and Faactotum only

SPECIFIC ACCESSORIES



Carrier case with release system
(Patented)

Item code 490065



NEW Carrier case in stainless steel
with release system (Patented)

Item code 490110

Release lock with customised key
from no. 1 to no. 36

Item code 712501001 to 712501036

140° opening kit

Item code 390612

Magnetic travel limit kit

Item code 490126

NEW 180° opening kit

Item code 490111

Internal opening mechanical stop

Item code 722121

Couple of carrier cases without release system

Item code 490140

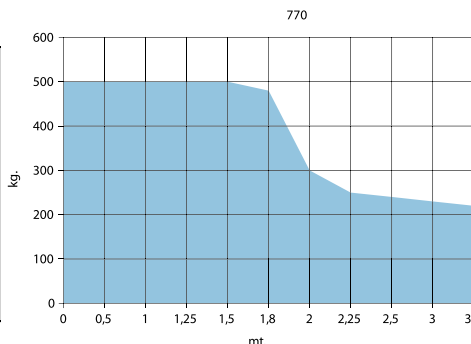
Internal closing mechanical stop

Item code 722122

Release lever
(for code 490140)

Item code 424010

| Anta mt. | Kg |
|----------|-----|
| 0 | 500 |
| 0,5 | 500 |
| 1 | 500 |
| 1,25 | 500 |
| 1,5 | 500 |
| 1,8 | 480 |
| 2 | 300 |
| 2,25 | 250 |
| 2,5 | 240 |
| 3 | 230 |
| 3,5 | 220 |



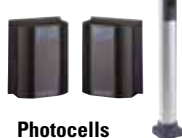
Notes

- **IMPORTANT:** the 770 and 770N operator must be supplied with a carrier case.
- You'll need the following for a two-leaf gate: two operators, two carrier cases and an control unit.
- For anti-crushing safety, use control units 452 MPS, 455 D or 462 DF, equipped with an electronic torque control device.
- **Gatecoder slow-down kit see page 153.**

OTHER ACCESSORIES



Key-operated push-buttons
page 159



Photocells and Columns
page 163



Safety devices
page 166



Flashing lamps
page 167



Transmitters
page 156



Various accessories
page 168